

**Gross Power**  
156 HP(116 kW) at 2,200 rpm

**Net Power**  
154 HP(115 kW) at 2,200 rpm

**Bucket Capacity**  
2.1 ~ 2.3m<sup>3</sup>

**Operating Weight**  
13,400kg / 29,542 lb

# HL940A

With Stage V Engine installed



## ▲ HYUNDAI CONSTRUCTION EQUIPMENT

**Head Office(Sales Office)**

3F, Bundang First Tower, 55 Bundang-ro, Bundang-gu, Seongnam-si, Gyeonggi-do, 13591, Korea

**Americas Operation : Hyundai Construction Equipment Americas, Inc.**

6100 ATLANTIC BOULEVARD NORCROSS GA 30071 U.S.A  
TEL (1) 847-678-823-7802 FAX (1) 847-678-823-7778

**Europe Operation : Hyundai Construction Equipment Europe N.V.**

HYUNDAILAAN 4,  
3980 TESSENDERLO, BELGIUM  
TEL (32) 14-56-2200 FAX (32) 14-59-3405

PLEASE CONTACT



# WHAT'S NEWEST AND BEST

## THE BEST PRODUCTIVITY AND FUEL EFFICIENCY

- STAGE V Engine **NEW**
- Eco Report **NEW**
- Smart Power Mode **NEW**
- Hydraulic Differential Lock **Option**
- Parallel Z-bar Linkage
- ICCO (Intelligent Clutch Cut Off)
- Automatic Engine Shut Down
- Optimized Power Matching

## ULTIMATE DURABILITY

- Sinter Brake Disc
- Highly Durable Axle
- Hydraulic Hose
- Optimized Drive Shaft

## EASY CONTROL AND COMFORTABLE OPERATION

- Foldable Side Mirror **NEW**
- Fully Adjustable Seat and Armrest **NEW**
- Remote Door Control **NEW** **Option**
- Auto Greasing System **Option**
- Ride Control **Option**
- Full Sound-Proofed Spacious Cabin
- Wide Touch Screen Monitor
- Centralized Cluster
- Soft end Stop
- Weighing System

## THE ULTIMATE SAFE ENVIRONMENT

- Seat Belt Warning Alarm **NEW**
- Radar **NEW** **Option**
- AVM (Around View Monitoring) **Option**
- IMOD (Intelligent Moving Object Detection) **Option**

## SERVICEABILITY AND TELEMATICS

- ECD(Engine Connected Diagnostics) **NEW**
- Fully Openable Engine Hood **NEW**
- Hi-MATE **Option**
- Easy Filter Replacement
- Wide Core & Fin Radiator





# THE BEST PRODUCTIVITY AND FUEL EFFICIENCY

The new HYUNDAI HL940A with new engine technologies is satisfying the most strict environmental emission regulation in the world and A series in wheel loader have a number of new features that contribute to overall fuel and also production efficiency

## FUEL SAVINGS

up to **5%**  
V-type loading cycle  
(Compared to Power mode)



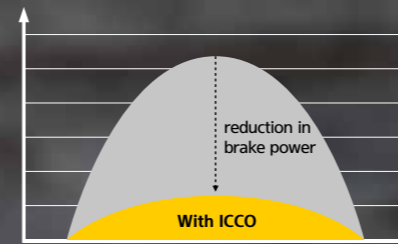
### Parallel Z-bar Linkage

Newly developed parallel z-bar linkage provides perfect vertical lift function with high tilt forces.



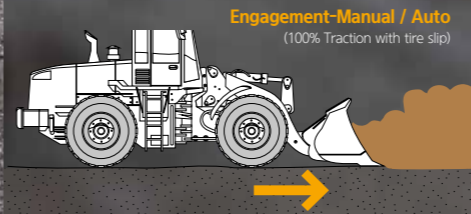
### ICCO (Intelligent Clutch Cut Off)

By selecting of 'H-Mode' among clutch cut-off selections, ICCO will be engaged for both less power loss in torque converter and lower heat generation on brake sides.



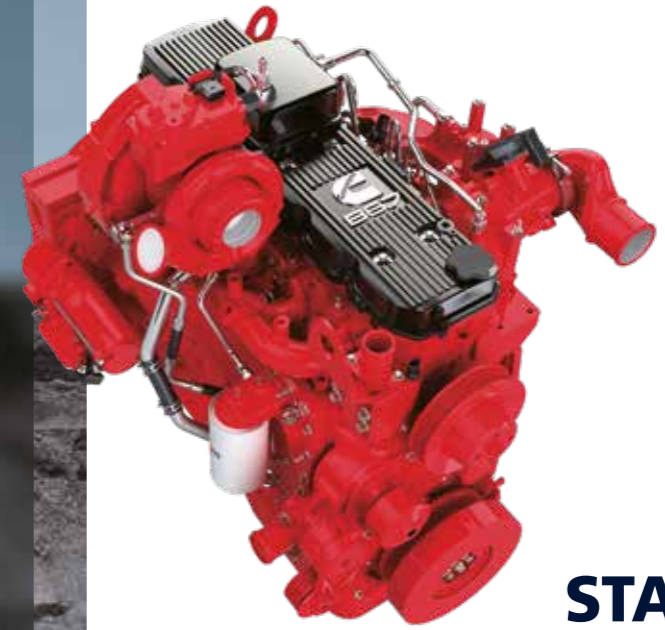
### Hydraulic Differential Lock **Option**

Hydraulic differential lock has the advantages of both improving productivity and less fuel consumption by preventing tire slip during the operation.



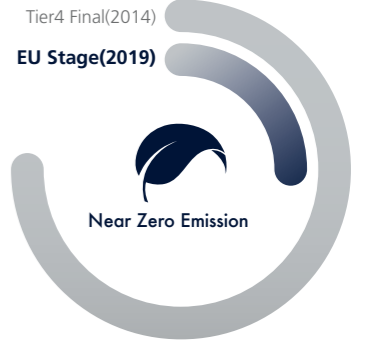
### Smart Power Mode **NEW**

Smart Power mode reduces fuel consumption by adjusting the engine speed in heavy load work like digging. The key point of this function is not only saving fuel with same performance as Power mode but also making good balance between traction force and breakout force.



### STAGE V Engine **NEW**

Euro stage V emissions certified 'Cummins B6.7' engine designed for maximum productivity and fuel efficiency. Due to the absence of EGR, engine power and fuel consumption improved.



### Automatic Engine Shut Down

Adjustable 'Automatic engine shut down' significantly reduces idle time, overall operating hours and fuel consumption.



### Eco Report **NEW**

Eco report shows the wheel loader's inefficient operation status in order to improve operator's improper working habit.



### Optimized Power Matching

For maximum operational efficiency, the engine is designed to achieve high torque in the low RPM range. Change an engine rpm at peak torque to more low rpm section also.

\* Photo may include optional equipment.



## ULTIMATE DURABILITY

The true value of the HL940A, which is now far more powerful, is revealed in tough working environments. With the high-strength design structure and enduring system proven by rigorous road tests at various work sites, Hyundai wheel loaders can perform any high-load work to maximize productivity. Durability of frames and attachments has been enhanced by 50% compared to the previous Tier-4 final series.

### Sinter Brake Disc

The HL940A has a sinter disc of a new material with excellent durability to suppress generation of heat and vibration, heightening brake durability and enabling convenient maintenance with a service-friendly design.



### Highly Durable Axle

Highly durable ZF axles provide the best performance and efficiency in any workplace.



### Hydraulic Hose

Hyundai's hydraulic hoses have twice increased durability and product life cycle over previous hoses.



### Optimized Drive Shaft

Through thorough verification, the optimized drive shaft makes the HL940A wheel loader more durable.



\*Photo may include optional equipment.

## Full Sound-Proofed Spacious Cabin

State-of-the-art noise reduction technology of the HL940A ensures maximum silence(68 dB) in the same category of equipment, promising more silent and more pleasant interior space.



## Wide Touch Screen Monitor

The seven-inch capacitive-type display (like a smart phone display) provides excellent legibility.



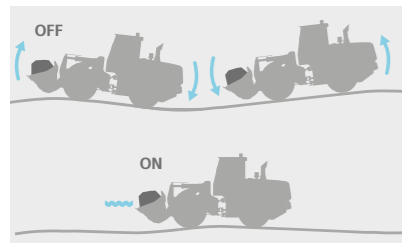
## Centralized Cluster

With a centralized cluster, operator can see at a glance all the states of wheel loader.



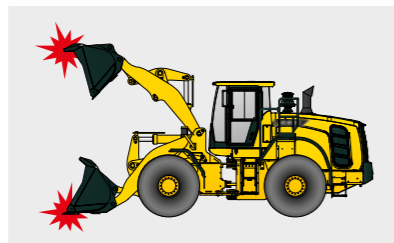
## Ride Control **Option**

Ride control system reduces operator fatigue and material spillage during operation. An accumulator helps to minimize shock, giving the operator a much smoother ride.



## Soft End Stop

When an attachment reaches at the end stroke, it gives operator enormous shock especially for Boom up. This function gives shock free operation by reducing the speed of attachment near the end stroke. It can be selected on/off through Monitor.



## Weighing System

The HL940A further improves work precision with additional weight calibration. The automatic/manual cumulative weighing function greatly enhances operating efficiency. Icons displaying weighing errors and the two-color weight value indication on the monitor enable accurate weighing to support efficient production management.



## Foldable Side Mirror **NEW**

Foldable Mirror makes it easy to adjust the angle of the mirror and prevent damage when transporting.



## Remote Door Control

**NEW** **Option**

Remote door control allows operators to open the cabin door remotely. This system was developed for the convenience and safety of the operator.



## Fully Adjustable Seat and Armrest **NEW**

This suspension will be applied for minimizing an operator's fatigue.



## Auto Greasing System **Option**

Auto greasing system is designed to automatically lubricate when it is needed. Uniform application of lubricant ensures that the lubrication points always have the correct amount of grease.



# EASY CONTROL AND COMFORTABLE OPERATION

The HL940A is optimized to enable operators to access accurate equipment data in a timely manner. This feature is more important in tough working environments to increase productivity while enjoying various forms of entertainment. Enjoy unparalleled satisfaction provided by infotainment of Hyundai's state-of-the-art information technology!



\*Photo may include optional equipment.



## HL940A with advanced technology ensures our safety on a construction site.



The A Series in wheel loaders are products of HCE's spirit of initiative, creativity, and strong drive. HCE engineers, who are the best in the industry, have worked tirelessly to offer a zero-defect product. The new A Series in wheel loaders reflects customers' needs in the field gleaned by thorough monitoring.

### **AVM(Around View Monitoring)** Option

### **IMOD(Intelligent Moving Object Detection)** Option

This is a system that is combined AVM (Around View Monitoring) with IMOD (Intelligent Moving Object Detection) and detects people around the machine and analyzes the images, which displays a warning sign on a monitor when detecting the danger. So operators can watch the surroundings in a variety of angles through the monitor and prevent the safety accident in advance.

<b>AVM</b>	<b>IMOD</b>	
It displays the position of people with a top view.	A green warning sign is displayed when people move in within a 5-meters radius.	A red warning sign is displayed when people move in within a 3-meters radius.

### **Radar** NEW Option

The Radar system can detect rear obstacles without blind spots and no distinction between day and night. Also, the distance of the obstacle is always displayed on the secondary monitor.

		<b>Display Concept</b>	
		1 Location(meter) is 1 Square	

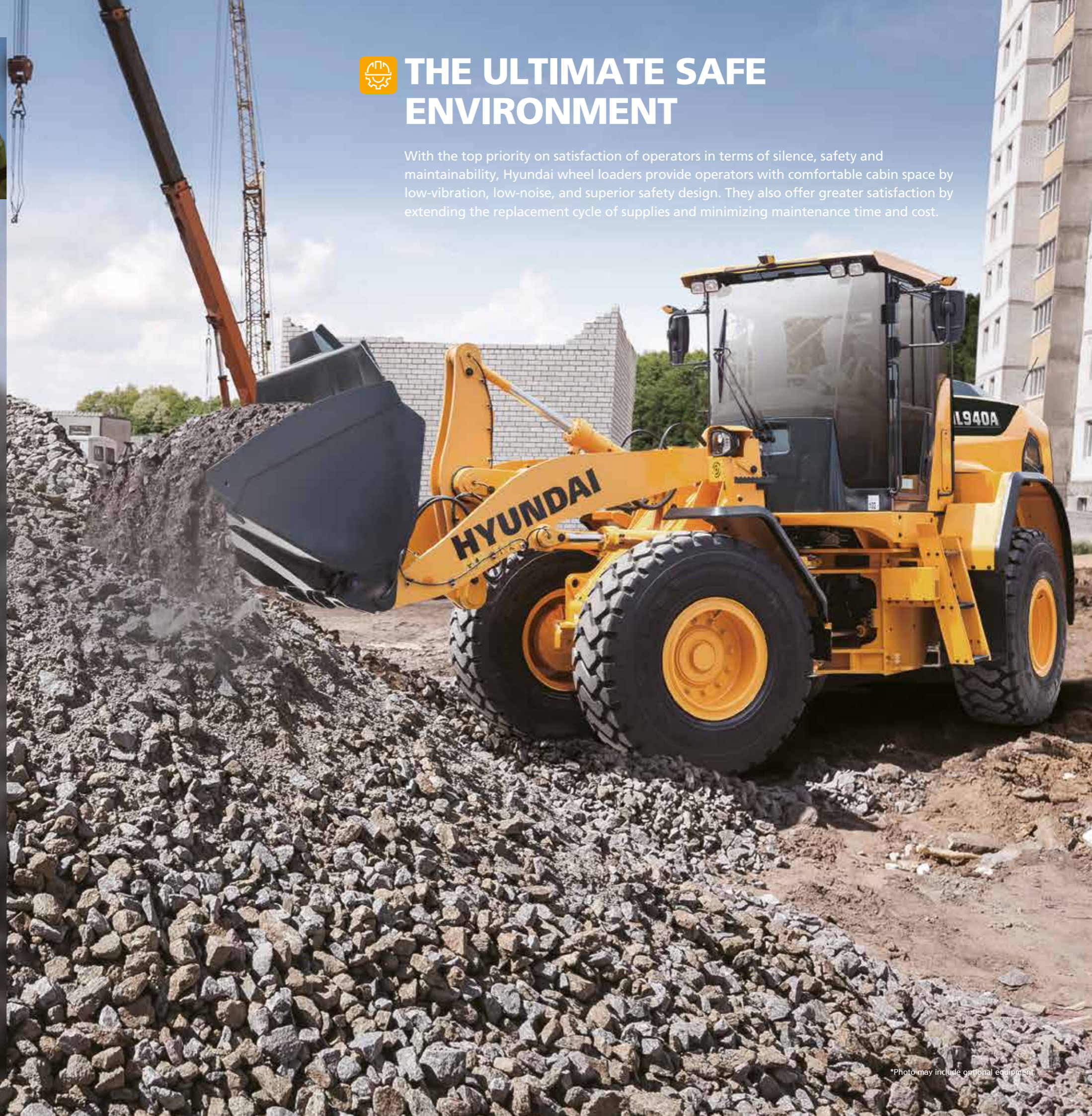
### **Seat Belt Warning Alarm** NEW

Seat belt warning alarm allows the operator to work in a safer environment.



# THE ULTIMATE SAFE ENVIRONMENT

With the top priority on satisfaction of operators in terms of silence, safety and maintainability, Hyundai wheel loaders provide operators with comfortable cabin space by low-vibration, low-noise, and superior safety design. They also offer greater satisfaction by extending the replacement cycle of supplies and minimizing maintenance time and cost.



\*Photo may include optional equipment.



# SERVICEABILITY AND TELEMATICS

IoT, ICT, AI-based digital technologies is creating smart construction sites. Maximizes connectivity, productivity, and safety for your successful businesses.



## HiMATE

Option

### IT'S CONVENIENT, EASY AND VALUABLE

Hi-MATE Hyundai's newly developed remote management system, utilizes GPS-satellite technology to provide customers with the highest level of service and product support available. Hi-MATE enables users to remotely evaluate machine performance, access diagnostic information, and verify machine locations at the touch of a button.

### WHAT IS BENEFITS



#### Increase Productivity

It helps you operate machines in efficient. You can check the difference between total engine hours and actual working hours. See how productive your machines are and plan any required cost saving solutions. Hi-MATE offers working information such as working / idling hours, fuel consumption and rate.



#### Convenient and Easy Monitoring

There is nothing much to do to monitor your machines. Just log on to the Hi-MATE website or mobile application. Hi-MATE allows you to watch your machines whenever and wherever you are.

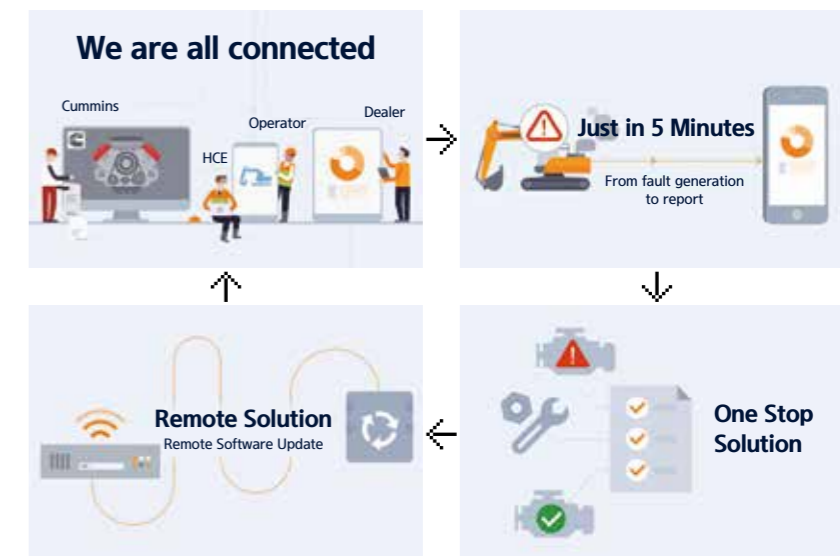


#### Security

Protect your machines from theft or unauthorized usage with Hi-MATE. If the machine moves out of the Geofence boundary, you will get alerts.

### ECD(Engine Connected Diagnostics) **NEW**

It supports service technician with remote diagnostics report and ensure it arrive on site with proper tools after preparing in advance.



### Fully Openable Engine Hood **NEW**

The HL940A has improved accessibility to the sealed engine room with retractable hood to allow easy cleaning and maintenance. The engine room was designed to prevent possibility of fire due to inflow of foreign materials. The fully retractable engine hood in the electric actuator opening mode also enhances maintainability of the engine room and cooling room.



### Easy Filter Replacement

With easy filter replacement, machine can be managed more easily.



### Wide Core & Fin Radiator

Wide core & fin radiator reduces clogging.

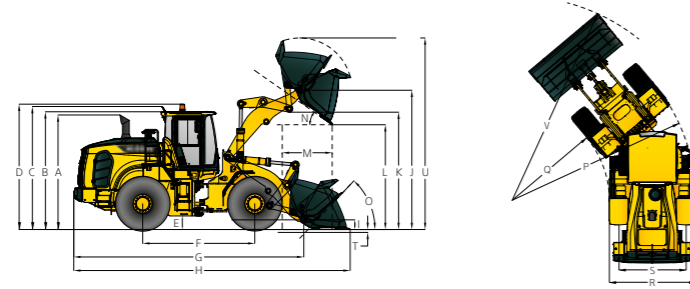


\*Photo may include optional equipment

# DIMENSIONS & SPECIFICATIONS

## DIMENSIONS

All dimensions are approximate.



Unit : mm (ft · in)

Description	HL940A	HL940A XT
A Height to Top of Exhaust Pipe	3,310 (10' 10")	3,310 (10' 10")
B Height to Top of Cabin	3,300 (10' 10")	3,300 (10' 10")
C Height to Top of Product Link Antenna	3,445 (11' 4")	3,445 (11' 4")
D Height to Top of Warning Beacon	3,430 (11' 3")	3,430 (11' 3")
E Ground Clearance	432 (1' 5")	432 (1' 5")
F Wheelbase	3,000 (9' 10")	3,000 (9' 10")
G Overall Length (Without Bucket)	6,430 (21' 1")	7,020 (23')
H Shipping Length (With Bucket Level on Ground)	7,600 (24' 11")	8,190 (26' 10")
I Hinge Pin Height at Carry Position	430 (1' 5")	600 (2')
J Hinge Pin Height at Maximum Lift	3,820 (12' 6")	4,425 (14' 6")

Description	HL940A	HL940A XT
K Lift Arm Clearance at Maximum Lift	3,235 (10' 7")	3,840 (12' 7")
L Dump Clearance at Maximum Lift and 45° Discharge	2,765 (9' 1")	3,370 (11.1')
M Reach at Maximum Lift and 45° Discharge	1,095 (3' 7")	1,090 (3' 7")
N Dump Angle at Maximum Lift and Dump (on Stops)	48	47
O Roll Back Angle	Ground 42 Carry 47	42 50
P Clearance Circle (Diameter) to Outside of Tires	10,910 (35' 10")	10,910 (35' 10")
Q Clearance Circle (Diameter) to Inside of Tires	5,910 (19' 5")	5,910 (19' 5")
R Width Over Tires (Unloaded)	2,450 (8')	2,450 (8')
S Tread Width	1,930 (6' 4")	1,930 (6' 4")

T, U, V are indicated on the p.17

## OPERATING SPECIFICATIONS WITH BUCKETS

Linkage Bucket Type	General Purpose Pin On		General Purpose - Hook On	High Lift Linkage Change
	Bolt - On Cutting Edges	Bolt-On Cutting Edges	Bolt-On Cutting Edges	
Capacity - Rated	2.3 m <sup>3</sup> (3.0 yd <sup>3</sup> )	2.1 m <sup>3</sup> (2.7 yd <sup>3</sup> )	2.3 m <sup>3</sup> (3.0 yd <sup>3</sup> )	-
Capacity - Rated at 110% Fill Factor	2.5 m <sup>3</sup> (3.3 yd <sup>3</sup> )	2.3 m <sup>3</sup> (3.0 yd <sup>3</sup> )	2.5 m <sup>3</sup> (3.3 yd <sup>3</sup> )	-
Width	2,600 mm (8' 6" ft/in)	2,550 mm (8' 4" ft/in)	2,600 mm (8' 6" ft/in)	-
Dump Clearance at Maximum Lift & 45° Discharge	2,765 mm (9' 1" ft/in)	2,795 mm (9' 2" ft/in)	2,640 mm (8' 8" ft/in)	+605 mm (+1' 12" ft/in)
Reach at Maximum Lift & 45° Discharge	1,095 mm (3' 7" ft/in)	1,065 mm (3' 6" ft/in)	1,220 mm (4' ft/in)	-5 mm (-0.2" ft/in)
Digging Depth	90 mm (3.5" ft/in)	90 mm (3.5" ft/in)	90 mm (3.5" ft/in)	+40 mm (+1.6" ft/in)
Shipping Length (with Bucket)	7,600 mm (24' 11" ft/in)	7,560 mm (24' 10" ft/in)	7,775 mm (25' 6" ft/in)	+590 mm (+1' 11" ft/in)
Overall Height with Bucket at Maximum Lift	5,185 mm (17' ft/in)	5,145 mm (16' 11" ft/in)	5,395 mm (17' 8" ft/in)	+605 mm (+1' 12" ft/in)
Loader Clearance Circle with Bucket at Carry Position	12,180 mm (40' ft/in)	12,110 mm (39' 9" ft/in)	12,280 mm (40' 3" ft/in)	+570 mm (+1' 10" ft/in)
Static Tipping Load, Straight (No Tire Deflection)	10,000 kg (22,050 lb)	10,100 kg (22,270 lb)	9,200 kg (20,280 lb)	-1,850 kg (-4,079 lb)
Static Tipping Load, Articulated (No Tire Deflection)	8,600 kg (18,960 lb)	8,700 kg (19,180 lb)	7,900 kg (17,420 lb)	-1,550 kg (-3,417 lb)
Breakout Force	11,800 kg (26,020 lb)	12,230 kg (26,960 lb)	10,200 kg (22,490 lb)	+140 kg (+309 lb)
Operating Weight*	13,400 kg (29,540 lb)	13,360 kg (29,450 lb)	13,675 kg (30,150 lb)	+460 kg (+1,014 lb)

# BUCKET SELECTION CHART

## DENSITY OF OPERATING MATERIALS

Loose Material	Material Density [ton / m <sup>3</sup> ]	
Earth / Clay	1.5 ~ 1.7	
Sand and Gravel	1.5 ~ 1.7	
Aggregate	25 ~ 76 mm (1" to 3 in)	1.6 ~ 1.7
	19mm (0.75 in) and Larger	1.8

## HL940HD BUCKET SELECTION CHART

### Standard Lift Arm - General Purpose Bucket

Type	m <sup>3</sup> (yd <sup>3</sup> )	Material Density [ton / m <sup>3</sup> ]														
		1.1	1.2	1.3	1.4	1.5	1.6	1.7	1.8	1.9	2.0	2.1	2.2	2.3	2.4	2.5
Cutting Edge	2.3 (3.0)	2.6 m <sup>3</sup> (3.4 yd <sup>3</sup> )										2.2 m <sup>3</sup> (2.9 yd <sup>3</sup> )				
Cutting Edge	2.1 (2.7)	2.4 m <sup>3</sup> (3.1 yd <sup>3</sup> )					2.0 m <sup>3</sup> (2.6 yd <sup>3</sup> )									
Cutting Edge Q/C	2.3 (3.0)	2.6 m <sup>3</sup> (3.4 yd <sup>3</sup> )										2.2 m <sup>3</sup> (2.9 yd <sup>3</sup> )				

### High Lift Arm (XT) - General Purpose

Type	m <sup>3</sup> (yd <sup>3</sup> )	Material Density [ton / m <sup>3</sup> ]														
		1.1	1.2	1.3	1.4	1.5	1.6	1.7	1.8	1.9	2.0	2.1	2.2	2.3	2.4	2.5
Cutting Edge	2.3 (3.0)	2.6 m <sup>3</sup> (3.4 yd <sup>3</sup> )					2.2 m <sup>3</sup> (2.9 yd <sup>3</sup> )									
Cutting Edge	2.1 (2.7)	2.4 m <sup>3</sup> (3.1 yd <sup>3</sup> )					2.0 m <sup>3</sup> (2.6 yd <sup>3</sup> )									
Cutting Edge Q/C	2.3 (3.0)	2.6 m <sup>3</sup> (3.4 yd <sup>3</sup> )					2.2 m <sup>3</sup> (2.9 yd <sup>3</sup> )									

115% 100% 95%

## CHANGE IN OPERATING SPECIFICATIONS - TIRES

Tires		20.5-25 16PR L5(LT05)	20.5 R25 XHA(LT25)	20.5-25 16PR L3(LT53)
Operating Weight (kg)	kg	+440	-52	-108
	lb	+970	-115	-238
Static Tipping Load, Straight (No Tire Deflection)	kg	+300 (+245)	-35 (-30)	-75 (-60)
	lb	+661(+540)	-77 (-66)	-165 (-132)
Static Tipping Load, Articulated (No Tire Deflection)	kg	+260(+210)	-30 (-25)	-65 (-50)
	lb	+573(+463)	-66 (-55)	-143 (-110)
Vertical Height Changes	mm	+65	-7	-3
	ft/in	+3"	-0.3"	-0.1"
R. Width Over Tires (Unloaded)	mm	+27	-6	-6
	ft/in	+1.1"	-0.2"	-0.2"
P. Clearance Circle (Diameter) to Outside of Tires	mm	+27	-6	-6
	ft/in	+1"	-0.2"	-0.2"
Q. Clearance Circle (Diameter) to Inside of Tires	mm	-27	+6	+6
	ft/in	-1"	+0.2"	+0.2"

\* Dimension Changes Compared to 20.5R25, ★, L3 tires.



# STANDARD / OPTION

CAB & INTERIOR	STD
<b>ALARMS, AUDIBLE AND VISUAL</b>	
Air Filter Logging	●
Battery Oltage	●
Brake Oil Pressure	●
DEF Low Level	●
Engine Coolant Level	●
Engine Oil Pressure	●
Fuel Level	●
Hydraulic Oil Temperature	●
Engine Coolant Temperature	●
Parking Brake	●
Service Brake Oil pressure	●
Seat Belt ON/OFF	●
Transmission Error	●
Transmission Oil Temperature	●
Alarm, Back-Up	●
<b>BATTERIES</b>	
850 CCA, 12 V, 2 PCS	●
<b>GAUGES</b>	
Diesel Exhaust Fluid (DEF) Level	●
Engine Coolant Temperature	●
Fuel Level	●
Speedometer	●
Transmission Oil Temperature	●
Horn, Electric	●
<b>INDICATOR LIGHTS</b>	
Differential Lock	●
FNR Joystick Steering	●
High Beam	●
Pilot Cut Off	●
Turn Signal	●
<b>LCD DISPLAY</b>	
Clock and Fault Code	●
Engine Rpm	●
Indicator	●
Job Time and Distance	●
Operating Hour Counter	●
Transmission Gear Range	●
Temperature (Coolant, Hydraulic Oil, T/M Oil)	●
<b>LIGHTING SYSTEM</b>	
Brake Lights (Counterweight)	●
LED Dome Light	●
2 Stop and Tail Lights	●
4 Turn Signals	●
2 Head Lights on Front Tower	●
2 Head Lights (LED) on Front Tower	●
2 Working Lights on Front Roof	●
4 Working Lights on Front Roof	●
2 Working Lights on Rear Roof	●
4 Working Lights (LED) on Front Roof	●
2 Working Lights (LED) on Rear Roof	●
2 Working Lights on Grill	●
2 Working Lights (LED) on Grill	●
<b>SWITCHES</b>	
Battery Master Switch	●
Differential Lock	●
Engine Hood Open	●
FNR Shifter	●
Hazard	●

CAB & INTERIOR	STD
Parking	●
Pilot Cut Off	●
Selective Catalytic Reduction	●
Secondary Steering	●
<b>MEMBRANE SWITCHES IN MONITOR</b>	
Main Light	●
Work Light	●
Auto Grease	●
Quick Coupler	●
Ride Control	●
Work Load	●
Beacon Light	●
Rear Wiper	●
Mirror Heat	●
Auto Position	●
Fine Modulation	●
<b>IGNITION</b>	
Key	●
Button	●
<b>CAB (SOUND SUPPRESSED)</b>	
Cigar Lighter & Ashtray	●
Coat Hook	●
<b>AUTOMATIC CLIMATE CONTROL</b>	
Air Conditioner and Heater	●
Defroster	●
Intermittent Wiper and Washer, Front and Rear	●
<b>SEAT</b>	
2" REtractable Seat Belt & Adjustable Mechanical Suspension (HEated)	●
2" REtractable Seat Belt & Adjustable Air Suspension (HEated)	●
3" REtractable Seat Belt & Adjustable Air Suspension (HEated)	●
<b>PERSONAL STORAGE SPACE</b>	
Console Box	●
Holder, Can and Cup	●
Rear View Mirrors (1 Inside)	●
Rear View Mirrors (2 Outside, Heated)	●
Steering Column, Tilt And Telescopic	●
Steering Wheel With Knob	●
Roller Type Sunshade (Front Window)	●
Roller Type Sunshade (Rear Window)	●
Tinted Safety Glass	●
One Door Cab	●
Magazine Pocket	●
<b>PEDALS</b>	
One Accelerator Pedal	●
One Brake Pedal	●
Dual-Brake Pedal	●
Accel Pedal Without ECO Switch	●
Accel Pedal With Eco Switch	●
Radio / Usb Player	●
Rubber Floor Mat	●
Wrist Rest	●
24 V to 12 V Dc Converter (20 A)	●

# STANDARD / OPTION

ENGINE	STD
Alternator, 95A	●
Antifreeze	●
<b>ENGINE, CUMMINS, B6.7</b>	
EU Stage V / EPA Tier 4 Final	●
Engine Enclosure, Lockable	●
Fuel / Water Separator	●
Engine Oil Level Dipstick Gauge	●
<b>CLEAN EMISSION MODULE</b>	
DOC, SCR, DPF	●
Fuel Warmer	●
Fan Guard	●
Rain Cap, Engine Air Intake	●
Coolant Level Sight Gauge	●
3 Stage Air Precleaner	●
<b>POWER TRAIN</b>	
<b>TRANSMISSION</b>	
Transmission F4 / R3, Computer Controlled, Electronic Soft Shift, Auto-Shift And Kick-Down	●
Features Included	●
Transmission Oil Sight Level	●
<b>AXLE</b>	
Open Differential (Front / Rear)	●
Limited Slip Differential (Front / Rear)	●
Hydraulic Lock Differential (Front)	●
<b>BRAKE</b>	
Service Brake (Enclosed Wet-Disc)	●
Parking Brake	●
<b>TIRES</b>	
23.5 R25, L3	●
23.5 R25, XHA2	●
23.5-25, 20PR, L3	●
23.5-25, 20PR, L5	●
<b>HYDRAULIC SYSTEM</b>	
Auto Grease System	●
Boom Kickout, Automati	●
Bucket Positioner, Automatic	●
Diagnostic Pressure Taps	●
<b>HYDRAULIC CONTROL</b>	
Joystick	●
Fingertip	●
Joystick & FNR Switch	●
<b>ELECTRO-HYDRAULIC CONTROL</b>	
Joystick	●
Fingertip	●
Eh Joystick Steering	●
Extra Piping for Auxillary Function	●
Hyundai Bio Hydraulic Oil (HBHO)	●
Hydraulic Oil Level Sight Gauge	●
Quick Coupler Piping	●
Ride Control System	●

SAFETY	
Fire Extinguisher	●
Boom Safety Lock	●
Emergency Steering	●
<b>OBJECT DETECTION</b>	
IMOD (Intelligent Moving Object Detection)	●
AVM (Around View Monitoring)	●
RADAR	●
OPS / FOG CAB.	●
<b>OTHER</b>	
Articulation Locking Bar	●
Air Compressor	●
<b>ATTACHMENTS</b>	
Cutting Edge, Bolt On Type	●
Counterweight	●
Counterweight - Heavy Weight	●
Door and Cab Locks, One Key	●
Doors, Service Access (Locking)	●
Doors, Service Access (Remote Control)	●
Drawbar With Pin	●
Quick Coupler	●
<b>ERGONOMICALLY LOCATED AND SLIP RESISTANT, LEFT &amp; RIGHT</b>	
Handrails	●
Ladders	●
Platforms	●
Steps	●
Lift And Tie-Down Hooks	●
Loader Linkage, Sealed	●
Parallel Z-bar Design	●
Vandalism Protection Caplocks	●
<b>TELEMATICS</b>	
Hi-Mate	●
ECD (Engine Connected Diagnostics)	●
Tool Kit	●
<b>GUARDS</b>	
Crankcase	●
Transmission	●
Fenders (Front / Rear)	●
Mud Guards	●

\* Standard and optional equipment may vary. Contact your Hyundai dealer for more information. The machine may vary according to International standards.  
 \* The photos may include attachments and optional equipment that are not available in your area.  
 \* Materials and specifications are subject to change without advance notice.  
 \* All imperial measurements rounded off to the nearest pound or inch.

# SPECIFICATIONS

## ENGINE

Maker / Model	CUMMINS / B6.7
Type	Turbocharged, charge air cooled, diesel engine
Gross Power (SAE J1995)	156 HP (116 kW) at 2,200 rpm
Net Power (SAE J1349)	154 HP (115 kW) at 2,200 rpm
Max. Power	165 HP (123 kW) at 1,800 rpm
Peak Gross Torque (SAE J1995)	746 N·m (550 lb·ft) at 1,300 rpm
Displacement	6,700 cc (483 cu in)

- The indicated net power is available for the flywheel when the engine is equipped with a fan, alternator, air cleaner, and after-treatment device.
- The indicated gross power is obtained with the fan at maximum speed.

## TRANSMISSION

Torque Converter Type	3-Elements, Single-stage, Single phase
Tire	20.5 R25, ★, L3

\* Full automatic power shift, countershaft type with soft-shift in range and direction. Properly matched torque converter to engine and transmission for excellent working ability

Travel speed, km/h (mph)	4 speed T/M	
Forward	1st	7.0 (4.3)
	2nd	12.8 (7.9)
	3rd	25.2 (15.6)
	4th	40.0 (24.9)
Reverse	1st	7.4 (4.6)
	2nd	13.5 (8.4)
	3rd	26.5 (16.5)

## AXLES

Drive System	Four-wheel drive system
Mount	Rigid front axle and oscillating rear axle
Rear Axle Oscillation	Oscillation $\pm 11^\circ$ of center pin-loaded
Hub Reduction	Planetary reduction at wheel end
Differential	Conventional
Reduction Ratio	21.53

## OVERVIEW

Description	HL940A	HL940A XT
Operating Weight	13,400 kg (29,540 lb)	13,860 kg (30,560 lb)
Bucket Capacity	Heaped	2.3 m <sup>3</sup> (3.0 yd <sup>3</sup> )
	Struck	2.0 m <sup>3</sup> (2.62 yd <sup>3</sup> )
Breakout Force-Bucket	11,800 kg (26,020 lb)	11,940 kg (26,320 lb)
Tipping Load	Straight	10,000 kg (22,050 lb)
	Full Turn	8,600 kg (18,960 lb)

## TIRES

Type	Tubeless, loader design tires
Standard	20.5 R25, ★, L3
Options Include	20.5-25 16PR L3 20.5-25 16PR L5 20.5 R25 XHA2

## HYDRAULIC SYSTEM

Type	Load sensing hydraulic system	
Pump	Variable displacement piston pump, 149 lpm	
Control Valve	2 spool (Bucket, Boom) 3 spool (Bucket, Boom, Aux)	
System Pressure	280 kgf/cm <sup>2</sup>	
Lift Circuit	The valve has four functions: raise, hold, lower and float can adjust automatic kickout from horizontal to full lift.	
Tilt Circuit	The valve has three functions: tilt back, hold and dump. Can adjust automatic bucket positioner to desired load angle.	
Cylinder	Type : Double acting	
	No. of cylinders-bore x stroke:	
	Lift	2-110 × 738 mm (4.3" × 29")
	HL940A Tilt	125 × 560 mm (4.9" × 1' 10")
HL940A XT Tilt	125 × 580 mm (4.9" × 1' 11")	
Cycle Time	Raise: 5.5 sec, Dump: 1.1 sec Lower: 3.0 sec, Total: 9.6 sec	

\* Hyundai Bio Hydraulic Oil (HBHO) available

## BRAKES

Service Brakes	Hydraulically actuated, wet disc brakes actuate all 4 wheels independent axle-by-axle system. Self adjusting & wheel speed brake.
Parking Brake	Spring-applied, hydraulically released brake
Emergency Brake	When brake oil pressure drops, indicator light alerts operator and parking brake automatically applies.

## STEERING SYSTEM

Type	Load sensing hydrostatic articulated steering
Pump	Variable displacement piston pump, 149 lpm
System Pressure	210 kgf/cm <sup>2</sup>
Cylinder	Double acting 2-65 × 429 mm (2.5" × 16.9")
Steering Angle	40° to both right and left angle, respectively

Features

Center-point frame articulation. Tilt and telescopic steering column.

## SERVICE REFILL CAPACITIES

Fuel Tank	220.0 liters (58 US gal)
Def Tank	30.0 liters (7.9 US gal)
Cooling System	37.0 liters (9.8 US gal)
Crankcase	18.0 liters (4.8 US gal)
Transmission	34.7 liters (9.2 US gal)
Front Axle	23.0 liters (6.1 US gal)
Rear Axle	23.0 liters (6.1 US gal)
Hydraulic Tank	90.0 liters (23.8 US gal)
Hydraulic System (Including Tank)	130.0 liters (34.3 US gal)

## AIR CONDITIONING SYSTEM

The air condition system for the machine contains the fluorinated greenhouse gas with global warming potential of R134a. (Global Warming Potential : 1430) The system hold 0.75kg refrigerant consisting of a CO<sub>2</sub> equivalent 1.07kg metric tonne. For more information, Please refer to the manual.

# MEMO